



BOUGRES D'ÂNES

Hike each day from the shelter « le coq à l'âne » (minimum two days)

Rent of a donkey the first day: 40 €

Rent of a donkey day after : 35 €

" In the discovery of the Romanic treasures of Brionnais "

KNOW YOUR ROAD ...

We advise you to arrive the day before your hike and suggest you welcoming between 17 and 19 o'clock (we have good addresses if you want to reserve a nice residence near to us). So, we shall take time to present you your travelling companions and to describe every day of hike by showing you the places where it is necessary to be a little more attentive, places to be visited, the good places where to rest you, to drink a glass... everything, everything so that you took the maximum of pleasure during your hike. You can also ask us the questions which interest you, all this in front of a small glass of welcome.

If you cannot or do not wish to arrive the day before, we wait for you in the morning before **10 am** with a small coffee to wake you before the great departure and to present you the different days of hike.

We give you then your file " ride with an ass ", including :

- Cards IGN in the 1/25000th with your hike (if you wish to keep cards IGN in recollection, we resell them to you new at coutant price; it is enough to let it to us know rather quickly). It's preferable (but not necessities)to know how to read a card IGN.
- The roadbook extremely detaile by each of your circuits.
- A small guide of advices to drive a donkey.

KNOW YOUR DONKEY

We fetch together donkeys in the meadow to learn you to put them their « licol ».

We shall take time to present you your donkeys so that a good relation settles down between you.

We explain you how to take charge in detail of your donkeys (with brushing, with cleaning out feet) and give you a small bag with all the necessary material.

We show you how to equip your donkeys by giving you the indispensable advices so that your donkeys do not injure themselves: donkeys are equipped with a packsaddle of porterage with crosspieces on which we hang on two big bags which are supplied to you and in which you can store your luggage. These big bags must be filled with the same weight of luggage and for it, we shall supply you a steelyard which will allow you to weigh your big bags in every departure.

A donkey carries up to 40 kilos maximum, weight of bags AND child, if this weight is exceeded, it is your back which carries the rest.

View of the maximum weight that a donkey can carry, we advise generally to take a donkey for 3 to 4 persons. This rule often varies according to the age of the children accompanying the hike and with their capacity to walk enough for a long time: in every case we propose you a number of asses which, by experience, seems to us adapted to your group.

And finally, we explain you how to lead a donkey in hike, by approaching every subject necessities in the good progress of your holidays.

All this last approximately 1:30 am at 2 am that is why earlier you arrive at our farm, earlier you leave on roads!

ON PATHS...

We accompany you at the beginning of the hike, and as soon as we feel you are well in confidence with your new fellow travellers, we let you pursue your road lonely...

If you wish to go up the children on the back of donkeys and if these have their own helmet MOUNTAIN BIKE, think of taking it.

We remind you that the possible portorage of a child is made under the whole responsibility of the accompanying adults, our activity being of the transport and not the equitation. It is asked to the walkers to have an insurance persons, accidents and general civil liability.

The children of less than three years cannot rise on the back of the donkey (we provide you with one carries baby of hike if you don't have it).

If you wish to take your dog, it is completely possible provided that it is very docile; most of our donkeys are used to hike with dogs and if this one is peaceful, it will become used fast to our donkeys, but your dog will know how to hold on when it will cross our hens, sheeps and other dogs that it will meet in the stages???.Is Your dog enough pulled for the hike? Finally, you are not sure that to take your dog is a good solution, but you have no means to make it guard : we have in 5 km from our home a very comfortable hotel for dogs.

Our donkeys are kind and docile because we educated them with respectfully and patience. We tested them all on the circuits which you go through. They are professionals of the hike but it does not prevent that our donkeys remain human beings with their character and their reactions which we cannot always foresee. Even if donkeys are very well allowed drive by the children, the permanent attentiveness of an adult is necessary.

The length of the stages varies according to circuits from 12 to 18 km, that is 4 at 6 am of quiet walking.

Circuits were all tracked down by our care. You will walk a very big part of time on extremely well maintained paths, our country being crossed by hundreds of kilometres of paths.

HOW TO EQUIP YOURSELF IN BEST

Do not charge too much, calculate, please, what is really necessary for you, according to the chosen accommodation (you do not need a towels of toilet and sleeping bags if you sleep in guest houses for example).

Think in :

- Prepare your luggage so as to be able to put them and distribute them easily in big bags (sports bags or rucksacks, or even simply solid bin liners. Suitcases are to be avoided) to put the same weight in each of both bags (20 kilos maxi in every big bag if no child rises on the donkey). Think of taking a bag or several small rucksacks which you can carry on your back if the donkey is too much loaded with!
- Take a bottle of water by person minimum.
- Take limp hermetic typical tupperware for your pic nic, place settings, plates, tumblers, thermos jug for the coffee, the gourd for the wine and for the water, and to store all this a cool bag (type bag with frozen food) and 1 or 2 blue blocks to keep your pic nic at the cool (Take all this even if you foresaw that we prepare you pic nics EXCEPT WHEN you take the pic nic of the first day of hike, in which case we supply you all the material of pic nic).
- The flashlight or the frontal
- In clothes, rainy clothes or cut wind, the adequates shoes of hike with which you have already walked because the new shoes risk to hurt you very in feet, hats for youngs as for big and finally sun cream.

THE BRIONNAIS IN SOUTH BURGUNDY

" one of the regions the most close to the paradise "

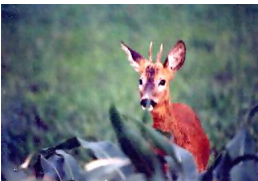
It's Jacques CLOUTEAU, a writer and big traveler with his donkey Ferdinand who so defines Brionnais. Brionnais, it is this small discreet country in the heart of France, in the South of Burgundy. We invite you to discover this green carpet of thick herb. It's a garden dotted with Romanic bell towers, watchtowers indicating far off small villages covered with roofs of scales or with red tiles.

He sometimes makes the round back, with his standing clods of castles and houses of characters. He reveals his secrets to the bends of paths lined with hedges, with, suddenly, valleys dug in the direction of the big river, the Loire, with small lazy brooks and the herds of our famous white cows from Charolais race.

Because of the sweetness of these made uneven, our region is particularly adapted to the hike in family; so the children, even the youngest can go through without too many difficulties most of the circuits and if they are tired, the donkey will know how to relieve their legs. But our green bocage will also know how to delight every person who does not wish to realize a sports exploit, but simply to taste the pleasure of the walking in a magnificent and peaceful environment.

DAY AFTER DAY...

The first day, you will leave the farm to pass on the other side of the Loire in the direction of the hills of Brionnais. You will take paths and small typical roads of the bocage Brionnais, leading to the small villages of Fleury the Mountain, lived in time of the Gauls by the tribe of "bramavi" (the population is much less barbaric now, reassure you!), of Saint Bonnet de Cray and Saint Julien de Jonzy. It is a circuit in very varied and very panoramic aspects, each of its villages being at the top of a hill. You will sleep in the village of Saint Julien de Jonzy where several solutions of accommodations offer themselves to you (about 14 km).



The next days, you will have the choice between various hikes going from 5 to 20 km. You can leave on the paths of the laundries which will make you pass by the typical hollow roads of our country as the tunnel of the lovers. You will walk on the paths of crests of our hills which offer to you magnificent points of view on the hedged farmland and on villages. You will go to Semur in Brionnais, classified as one of the most beautiful villages of France, where you can visit its old castle and its magnificent

Romanic church. Then you will return to your shelter by the ancient covered way of the village.

Some surprises wait for you, in the bend of roads: " the inseparable " (a foyard and an oak embraced for the life), of ancient laundries, small ponds convenient to a good break pic nic or for 4 o'clock. In the pond of Puisat, you will find an animal look-out post where you can settle down to try to see a family of roe deers with stroll, a squirrel in full work of harvest at the beginning of the autumn, and if you do not see it, perhaps you'll be able to hear the greedy green woodpecker...

The last day, you leave the civilization to delight in nature and in tranquillity... you will take 90 % of paths in perfect state that crossing big forests of broad-leaved trees as the wood of the tower, the big wood, the wood of the priests, the wood of king, then you will finish your hike by the visit of the magnificent Romanic church of Iguerande overhanging the Loire valley, a sight to cut the breath on the river... Give you the time of spaces (approximately 15 km)!

IT'S TIME TO REST

The shelter of « le coq à l'âne » was chosen for the quality and the heat of the shelter, for the quality of the reception of your donkeys, for the quality of the hike from this residence, but especially for the conviviality of the reception which reserves you Françoise.

The shelter of « coq à l'âne » is an ancient farm renewed with a room with two individual beds, a mezzanine with four sleepings around which is particularly appreciated by the children. In the lounge, is a sofa click snap being able to welcome two other persons.

The shelter also possesses an equipped kitchen, a comfortable dining area. The room of bath is equipped with a washer. And for spring and the autumn, a small fireplace will know how to warm the too fresh evenings.

Françoise suggests to prepare the dinner and the pic nics if you wish it. If you wish to cook, no problems, but foresee enough food, because there are no means of provisioning in the village (Françoise can sell you eggs and can help you to get fresh supplies if you need).

You are here in a mini farm: hens, asses, rabbits, guinea pigs, cats, dogs ... Do not worry, Françoise will invite the children in the morning to the collection of eggs and to the cuddles of donkeys and rabbits for their biggest pleasure.

We can prepare you the pic nic of the first day with vegetables, fruits and eggs of our farm and other farm produces of very good quality. Prices: 6 € a person.

Adresse	Tarifs
Françoise JULIEN Gîte du coq à l'âne Saint Julien de Jonzy 03 85 84 10 97	<p style="text-align: center;">Price for one night (included breakfast):</p> Two persons : 47 € supplementary Person: 16 € <p style="text-align: center;">Price for one week : 350 €</p> Dinner : 12 € / personne Pic nic : 7 € / personne

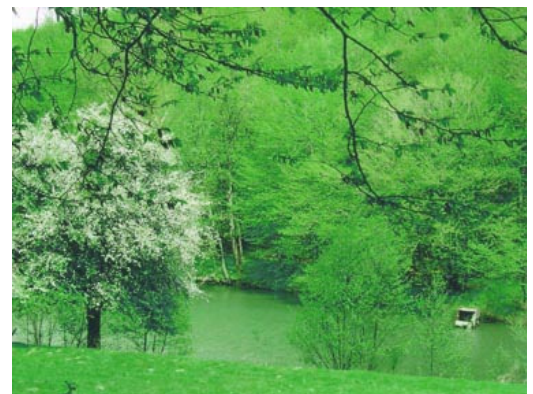


shelter



Church and castle of Semur en Brionnais

Old washhouse



Small pond in Brionnais

TO COME TO OUR FARM

We are at 1h30 am of the North West of Lyon and at 2 am in the western South of Dijon.
We are at 9 am of London, 7 am Brussels, 4:30 am Paris, 3 hours of Geneva.

FOR OUR FRIENDS from Switzerland:

In Geneva, you take A40 in the direction of MACON, BOURG EN BRESSE.

Arrived around Mâcon, (it is the end of A40) you go to take the Highway A6 on some kilometres by taking the direction of Lyon, Marseille (you entered on the Highway A6 Mâcon Nord), then you take out the first exit, the exit Mâcon sud where you will take the direction of Charolles, Paray le Monial, Montceau les mines. And then follow the direction Paray le monial only.

In paray le Monial, take the direction of Roanne up to **the village of Iguerande**.

FOR THOSE WHO WOULD ARRIVE BY THE HIGHWAY A6 (OF BRUSSELS, BRUGGE, PARIS or LYON)

If you arrive from the North of France, you go out to Chalon sur Saône, to take the exit chalon sud and to take the direction of Montceau les mines; arrived at the level of Montceau les mines, take the direction of Roanne until Digoin. Arrived at Digoin continue to follow the direction of Roanne and this until you arrived at **the village of Iguerande**.

If you arrive from the South of France, go out to the exit Mâcon sud and take the direction of Charolles, Paray le Monial, Montceau les mines. And then follow the direction Paray le monial only.

In paray le Monial, take the direction of Roanne up to **the village of Iguerande**.

FROM PARIS

Take the A6 and after the A77 in the direction of Nevers, Montargis and exit in the direction of Magny court, Moulin. Arrived to Moulin, take the direction of Digoin. Arrived to Digoin, take the direction of Roanne til **the village of Iguerande** (about 30 km after).

FOR THE OTHERS WHO DO NOT PASS BY THE HIGHWAY:

If you manage from the South, take the direction of Roanne and in the entrance of Roanne, take the exit Montceau les mines, Paray le Monial, always to follow these two directions up to **the village of Iguerande** (approximately 18 km after).

If you arrive from the North, take the direction of Digoin where you will take the direction of Roanne. Follow this direction up to **the village of Iguerande** (approximately 30 km after).

FOR EVERYBODY WHEN YOU ARRIVE AT THE VILLAGE OF IGUERANDE:

TO COME TO BOUGRES D'ÂNES

At Iguerande there is a traffic light (not two!); if you come from Roanne (from the South), at the traffic light turn to the left in the direction of Melay, if you come from Digoin (from the North), on the traffic light to the right in the direction of Melay.

Continue quite straight ahead: you pass above the Loire. You arrive then at a crossroads where you set to the right in the direction of Melay. You follow then the canal which is on your left on approximately 1,5 km and you will take the first small bridge on your left (at the top of a hogback). Cross the canal in passing on this small bridge (panel « location d'ânes ») and park you at once to the left after the bridge. The farm is on your right-hand side.

TO COME TO SHELTER « DU COQ A L'ÂNE » :

At Iguerande there is a traffic light (not two!); if you come from Roanne (from the South), at the traffic light turn to the right in the direction of Mailly, if you come from Digoin (from the North), on the traffic light to the left in the direction of Mailly.

Go always straight on about 10 km (you will cross the village of Mailly). You will arrive at the end of this road at a give way sign where you take on your left in the direction of Marcigny and few meters later, you will have another crossroads where you take on your left again in the direction of Marcigny, Saint Julien de Jonzy. Cross the village, always in the direction of Marcigny and at the exit of the village, you have a bend on left. Just after this bend, you have the shelter of « coq à l'âne » on your left (there's a big picture « Gite du coq à l'âne » on the house).

BOUGRES D'ÂNES
Ferme de Putinat
71340 MELAY
Tel : 03 85 84 16 70
Email : bougresdane@aol.com

**Possibility of arriving by train: ask us for the
necessaries informations**

